



MN MOONWIRES

HIGH-END INTERCONNECT



swiss audio cables & accessories

MINERAL SHIELDED AUDIO CABLES

**UNLEASH THE
MUSICAL POTENTIAL
OF YOUR HIFI
SYSTEM**

Based in the canton of Valais in Switzerland, we produce high performance power cables, interconnect cables and optimization accessories for demanding audiophiles. Our passion for advising and selling hi-fi equipment has led us to create the leading brand of HI-FI cables and accessories Moonwires High-End Interconnect. What makes us different from the competitors? Entirely handmade in Switzerland, we favor high quality dielectric materials and shielding such as Mumetal & Teflon PTFE. Our trademark and expertise? Using minerals such as quartz sand and Shungite as natural shielding. The goal? To allow a transmission of current or signals without alteration or interaction with the external environment. This is why we can say that our cables are mineral shielded. Our commitment to you? Unleash the musical potential of your hifi system to experience the full emotion of your favorite music. Visit our website to learn more about the live music effect!



swiss manufactured products



SPECIFICATIONS: HIGH-END POWER CORD - FX SERIE

Conductors: Bare copper multi-strand DIN VDE 0295 cl.5

Cross section: 4x2,5mm² braided

Mineral shielding made of natural quartz sand & **Shungite**

Copper shielding braid

Sheath treatment by abrasion and hydrogen peroxide

Dielectric: Teflon PTFE insulation

Outer sheath: BASALT

Furutech FI-50 NCF (R) rhodium plated



swiss made



MOONWIRES
HIGH-END INTERCONNECT



SPECIFICATIONS: CENTAURUS SERIE

Conductors: multi-stranded bare copper

Conductor cross-section: 4x2.5mm² braided

Mineral shielding made of natural quartz sand

Sheathing treatment by abrasion and hydrogen peroxide

External shielding: copper braid

Dielectric: Teflon PTFE insulation

Outer sheath: black polyamide

Furutech connectors





SPECIFICATIONS: POWER CORD LYBRA SERIE

Conductors: bare copper multi-strand

Cross section: 4x1,5mm² braided

Mineral shielding made of natural quartz sand

Copper shielding braid

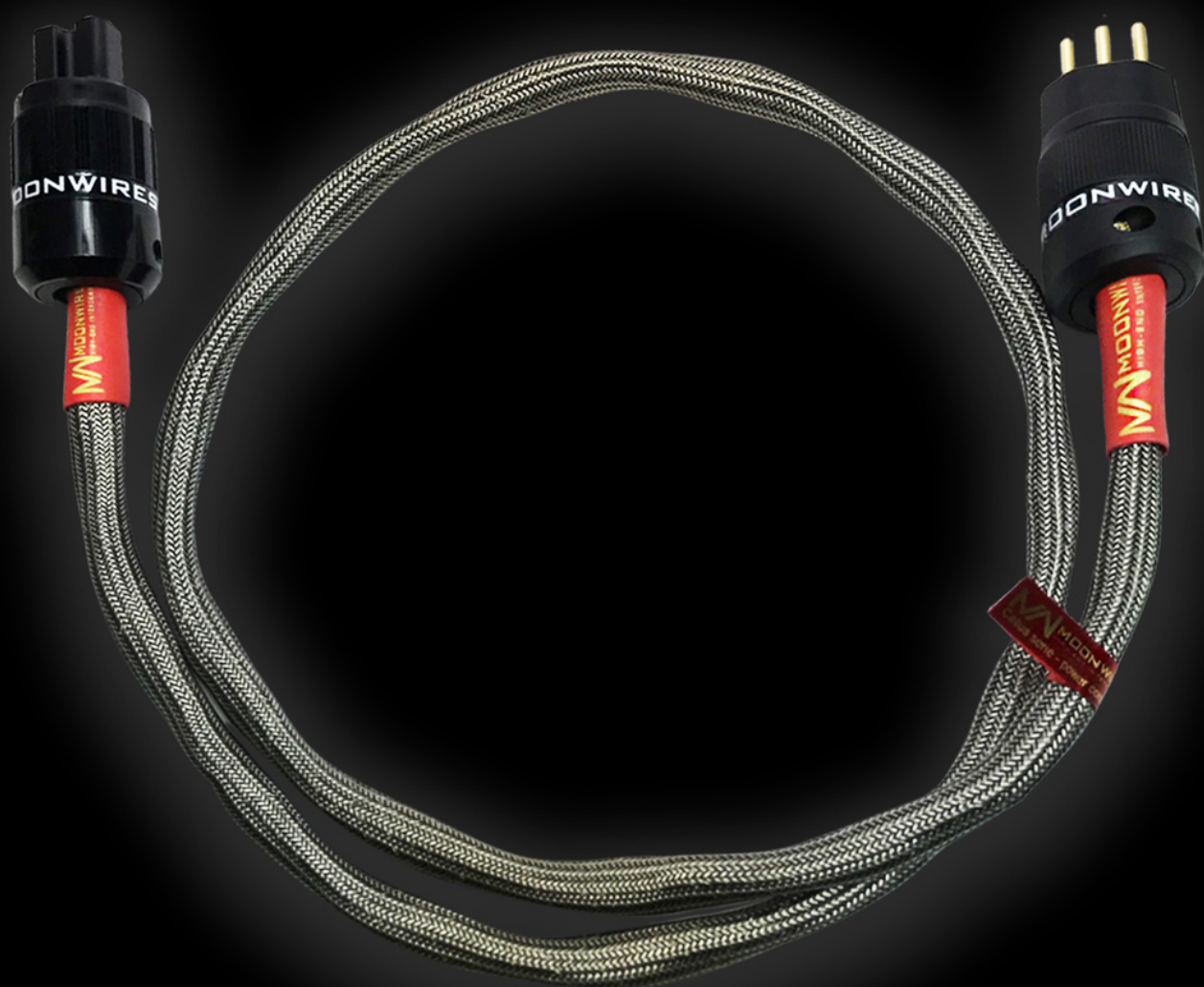
Sheath treatment by abrasion and hydrogen peroxide

Dielectric: Teflon PTFE insulation

Outer sheath: black polyamide

Gold plated connectors





SPECIFICATIONS: POWER CORD CETUS SERIE

Conductors: multi-stranded bare copper

Section: 4x2,5mm² braided

Mineral shielding: Shungite powder

Sheath treatment by abrasion and hydrogen peroxide

External shielding: copper braid

Dielectric: Teflon PTFE insulation

Outer sheath: polyester filaments and tinned copper

Gold plated connectors



swiss made



MOONWIRES
HIGH-END INTERCONNECT



SPECIFICATIONS: POWER CORD GEMINI SERIE

Conductors: multi-stranded bare copper

Section: 4x1,5mm² braided

Mineral shielding: Shungite powder

Shielding: Copper shielding braid

Sheath treatment by abrasion and hydrogen peroxide

Dielectric: Teflon PTFE insulation

Outer sheath: polyester filaments and tinned copper

Gold plated connectors





SPECIFICATIONS: COLUMBIA RCA CABLE

Inner conductor in steel, silver plated copper

Shielding: two silver plated copper braids

Mineral shielding with shungite powder

Dielectric: Teflon PTFE

Shielding of magnetostatic and low frequency magnetic fields by Mumetal foil

Outer sheath in basalt

RCA Copper Tellurium silver or gold plated



swiss made



MOONWIRES
HIGH-END INTERCONNECT



SPECIFICATIONS: ASTRAS RCA CABLE

Conductor: copper wire

Dielectric: polyethylene (PE) foamed cell

External shielding 1 copper foil

External shielding 2 copper braids

Mineral shielding with shungite powder

Dielectric: Teflon PTFE

Outer sheath in basalt

RCA Copper Tellurium gold plated





SPECIFICATIONS: BOREALIS RCA CABLE

Bare copper wire inner conductor

Dielectric foamed polyethylene cell (PE)

External shielding 1 Copper foil

External shielding 2 Copper braid

Mineral shielding with shungite powder

Dielectric: Teflon PTFE

Outer sheath in basalt

RCA Copper Tellurium gold plated



swiss made



MOONWIRES
HIGH-END INTERCONNECT



SPECIFICATIONS: CORVUS OMEGA RCA CABLE

Conductors: 2x0,75mm² fine copper wires

Shielding: tinned copper braid

Shielding by copper foil

PVC sheathing treated with abrasion and hydrogen peroxide

Shielding: copper foil

PTFE Teflon insulation

Mylar outer jacket

RCA Copper Tellurium gold plated



swiss made



MOONWIRES
HIGH-END INTERCONNECT



SPECIFICATIONS: CORVUS DELTA RCA CABLE

Conductors: 2x0,75mm² fine copper wires

Shielding by copper foil

PVC sheathing treated with abrasion and hydrogen peroxide

Shielding: copper foil

PTFE Teflon insulation

Mylar outer jacket

RCA Copper Tellurium gold plated



swiss made



MOONWIRES
HIGH-END INTERCONNECT



SPECIFICATIONS: CORVUS ALPHA RCA CABLE

Conductors: 2x0,5mm² fine copper

PVC-jacket treated by abrasion and hydrogen peroxide

PTFE Teflon insulation

Mylar outer jacket

RCA Copper Tellurium gold plated



swiss made



MOONWIRES
HIGH-END INTERCONNECT

NEW!

COLUMBIA EVO2 - HIGH-END XLR



SPECIFICATIONS: HIGH-END XLR

3 silver-plated fine copper conductors

Shielding: two silver-plated copper braids

Mineral shielding with shungite powder

Dielectric: Teflon PTFE

Magnetostatic shielding with Mumetal foil

External sheath in basalt

Cryogenic treated

High-end, rhodium-plated Furutech XLR connectors



CRYOGENIC
treated



swiss made



MOONWIRES
HIGH-END INTERCONNECT

NEW!

COLUMBIA

HIGH-END XLR GOLD Serie



SPECIFICATIONS: HIGH-END XLR

3 silver-plated fine copper conductors

Shielding: two silver-plated copper braids

Mineral shielding with shungite powder

Dielectric: Teflon PTFE

Magnetostatic shielding with Mumetal foil

External sheath in basalt

High-end, Gold-plated Furutech XLR connectors



swiss made



MOONWIRES
HIGH-END INTERCONNECT



SPECIFICATIONS: ALIOTH - HIGH-END "Star-Quad" XLR CABLE

5 way shielded single channel balanced "Star-Quad" audio cable !

Conductors: bare stranded LCOF copper wire 64 x 0.10 mm (4x)

Cellular PE insulation, Ø 2.00mm

Each of the 4 conductors is shielded with a 100% overlapping copper wire shield (Type "Reussen")

Conductor shielding: Non-woven polyester, heat-bonded, aluminum-coated on both sides

Double shielding "Reussen" of copper wires (0.10 mm). 100% coverage.

Mineral shielding: shungite powder

Dielectric: Teflon PTFE

Outer sheath: basalt

Furutech XLR connectors 24k gold plated with Alpha a. anti-magnetism treatment.





SPECIFICATIONS: CEPHEUS - XLR high-end analog cable

Conductors: bare stranded LCOF copper wire 64 x 0.10 mm

Insulation: cellular PE, Ø 2.00mm

Conductor shielding: Polyester nonwoven thermally bonded, both sides aluminium coated

Double shielding "Reussen" of bare copper wires (0.10 mm)

Shielding coverage: 100%.

Mineral shielding: shungite powder

Dielectric: Teflon PTFE

Outer sheath: basalt

Furutech XLR connectors with Alpha α. anti-magnetic treatment.



swiss made



MOONWIRES
HIGH-END INTERCONNECT



SPECIFICATIONS: CURSA 110 ohm - AES/EBU

Conductors: bare stranded LCOF copper wire 64 x 0.10 mm

Insulation: cellular PE, Ø 2.00mm

Conductor shielding: Polyester nonwoven thermally bonded, both sides aluminium coated

Double shielding "Reussen" of bare copper wires (0.10 mm)

Shielding coverage: 100%.

Mineral shielding: shungite powder

Magnetostatic and magnetic shielding: Mumetal foil

Dielectric: Teflon PTFE

Outer sheath: basalt and carbon fiber

Furutech XLR connectors with Alpha α. anti-magnetic treatment.



swiss made



MOONWIRES
HIGH-END INTERCONNECT



SPECIFICATIONS: SPIKA 75 ohm DIGITAL CABLE

Solid copper inner conductor

Dielectric cell made of polyethylene foam (PE)

Shielding: 2 aluminum foils

Shielding: copper braid

Shielding: mineral with shungite powder

Shielding: Mumetal foil against magnetostatic and low frequency magnetic fields

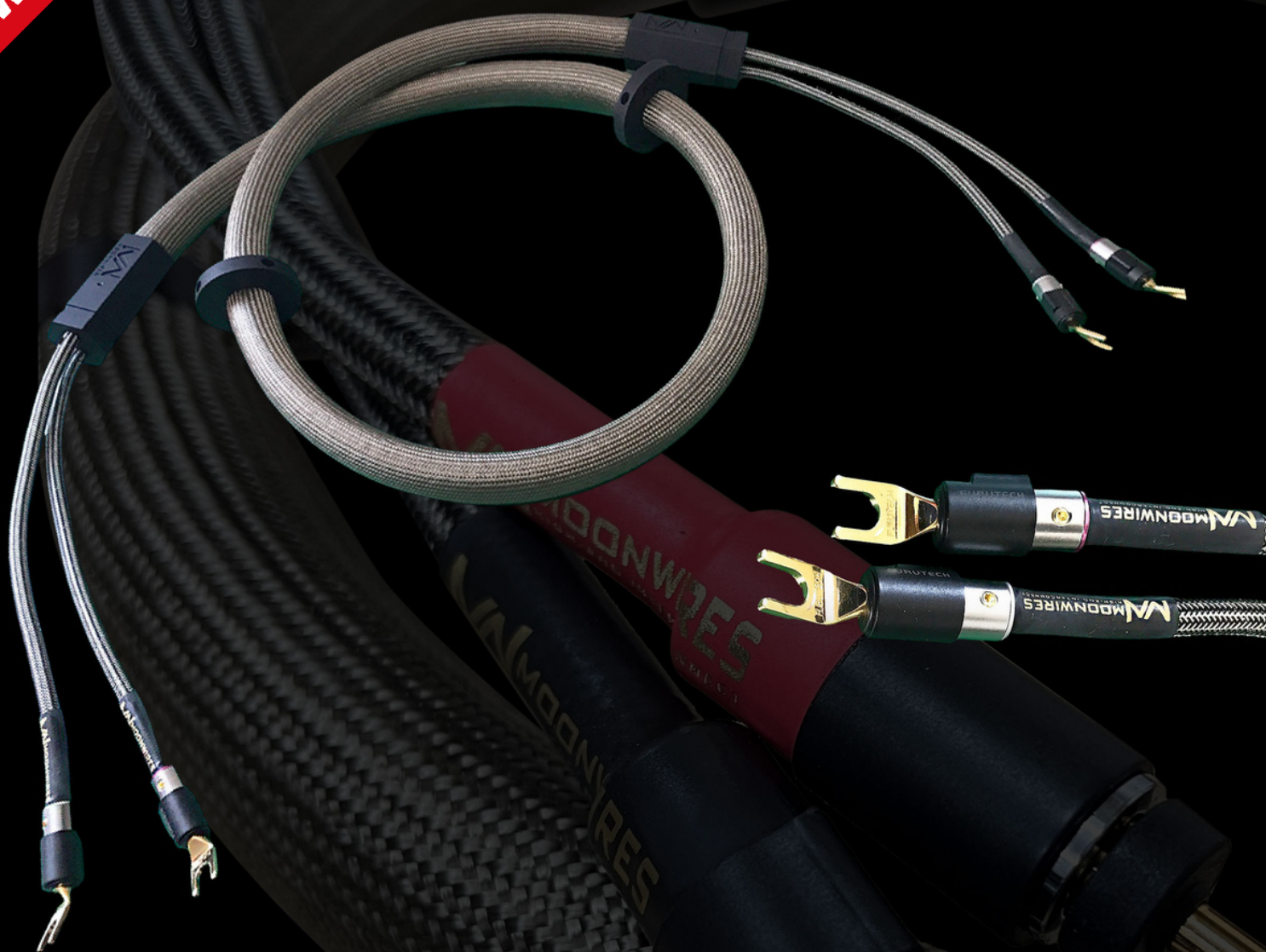
Dielectric: Teflon PTFE

Outer jacket: Basalt

Neutrik NF2CB2 RCA connectors



NEW!



SPECIFICATIONS: ANTARES SPEAKER CABLE

Minimum length: 2x2m

Additional length: 0,5m

Conductors: fine copper stranded wires

Section: 2x5mm²

Length of the end flexible caps: 30cm

Mineral shielding by natural quartz sand

Cryogenic treated

Dielectric: Teflon PTFE insulation

Outer sheath: Basalt

Floor decoupling rings included

Plugs: Furutech FT-211G forks or FT-212G bananas

Option: bridges for bi-wiring



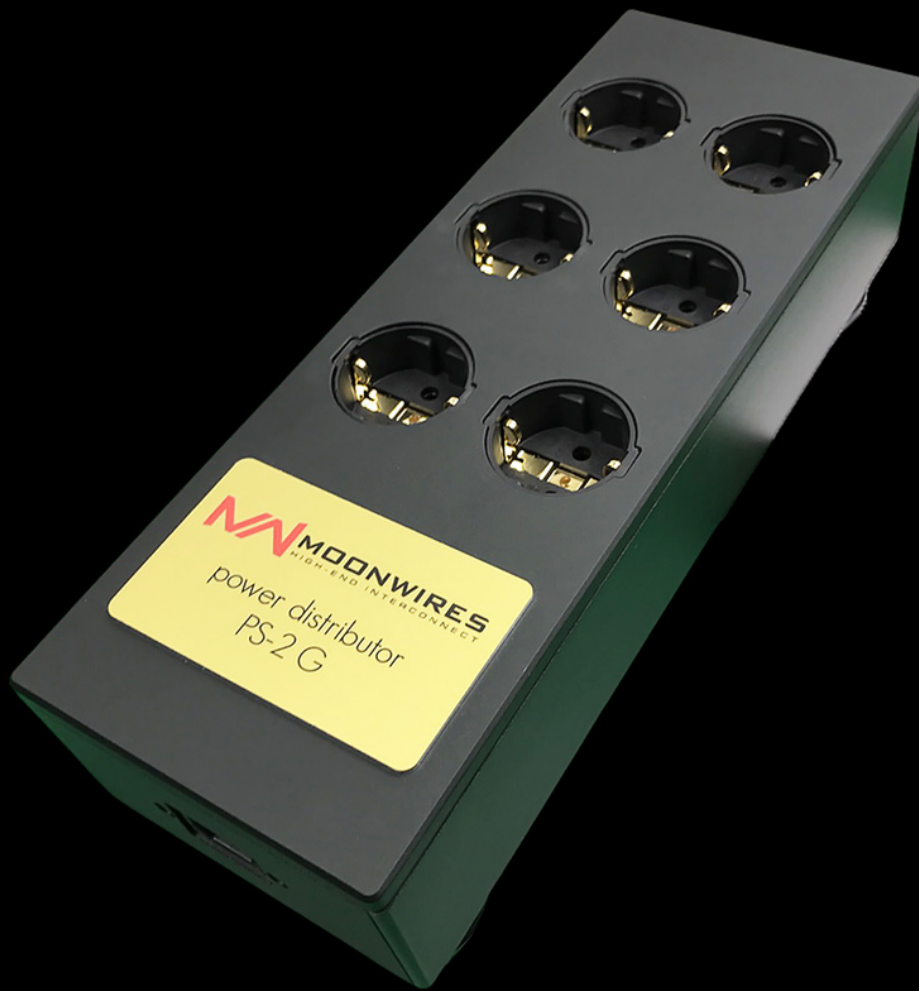
CRYOGENIC
treated



swiss made



MOONWIRES
HIGH-END INTERCONNECT



SPECIFICATIONS: PS-2G POWER DISTRIBUTOR

Aluminum frame

Dimensions 340 x 123 x 75 (L x W x H)

Mumetal case shielding

Schuko socket 24k gold plated (Alpha) Furutech

Aluminum damping feet

Internal conductors:

- section 3mm² (2x1.5mm² twisted)
- abrasion treated sheath
- Shungite powder coating
- Teflon insulation
- Basalt sheath
- Star type connection





swiss made



MOONWIRES
HIGH-END INTERCONNECT



David Bonvin
CEO

+41 (27) 539 94 54 
info@moonwires.com 
moonwires.com 